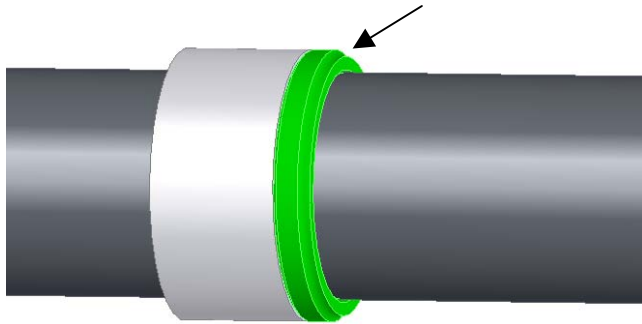


Attention ! To work on the W-Tec Eraser Evo chassis you must have excellent mechanic skills. If you do not have these skills do NOT work on this quad !

- 1) Slide small bearing ring on to the axis

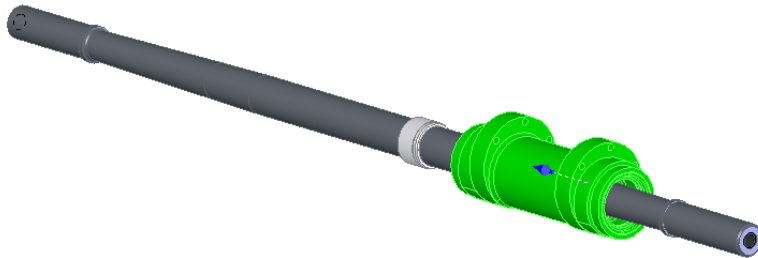


See next picture for detail.



Attention: Flat side against the joining piece

- 2) Slide pre-assembled excenter on to the axis.

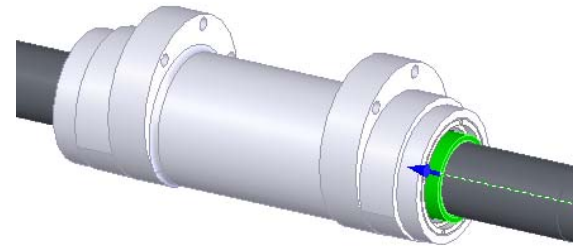


Balls of bearing drop in to circular groove

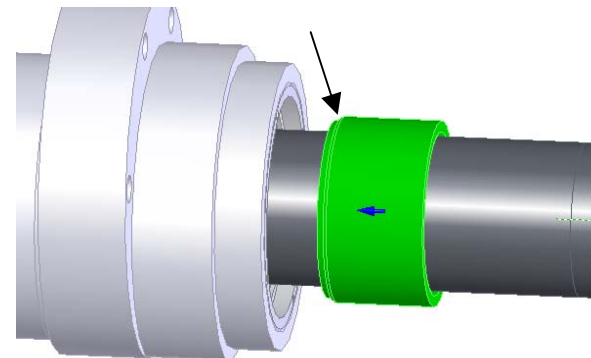
Grease the bearings!

Pre assembled excenter contains 2 bearings retained with 2 retainer rings. It's not allowed to replace the bearings. The bearings are **NOT** standard !

- 3) Slide bearing ring with circular groove in to the bearing.



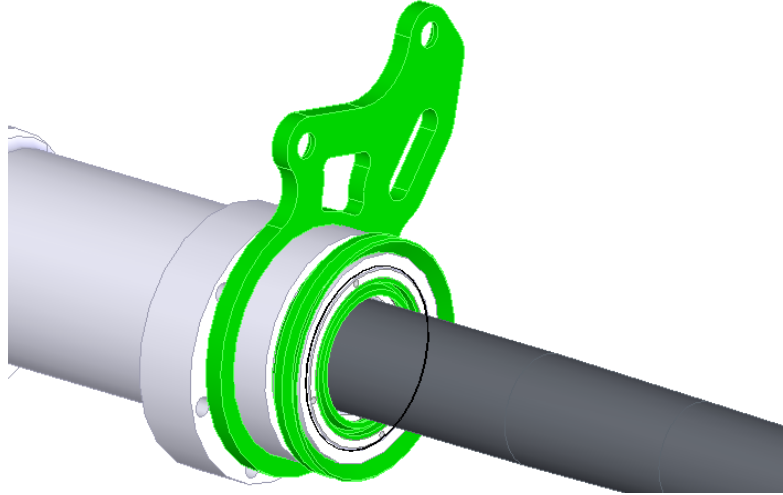
On the side of the wide bearing



**Changes and type failures reserved !
Copy right: W-Tec BV**

Attention ! To work on the W-Tec Eraser Evo chassis you must have excellent mechanic skills. If you do not have these skills do NOT work on this quad !

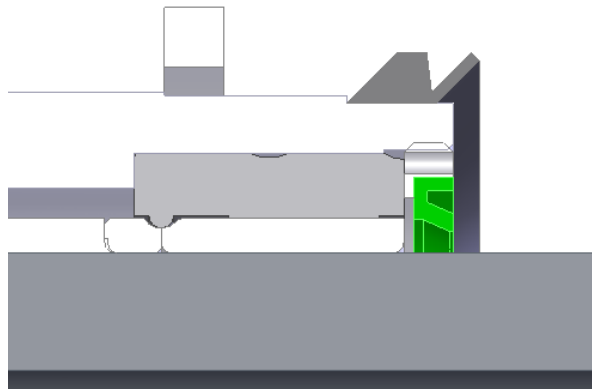
- 4) Place brake block holder, dust ring and oil seal.



Attention: Brake block holder has to be on the same side as the wide bearing.

Attention: Oil seal leaves dust outside de bearing. (see next picture for detail)

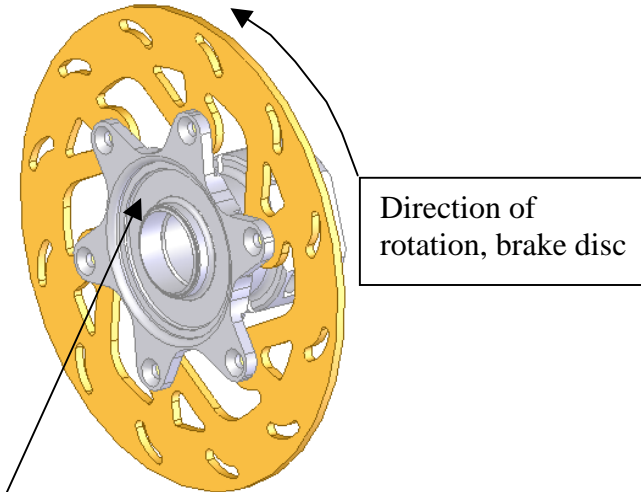
Attention: Mount the brake caliper holder the right way.



Section shows the right way of mounting the seals.

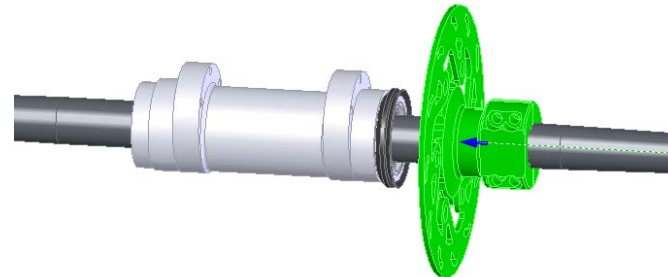
**Changes and type failures reserved !
Copy right: W-Tec BV**

- 5) Mounting brake disc on to the brake disc holder.



Grease inside of brake disc holder.

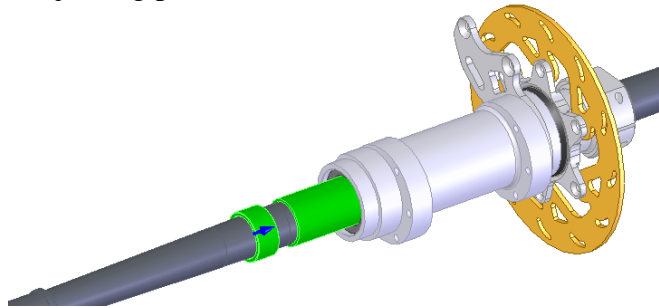
- 6) Slide pre assembled brake disc holder on to the axis, and fasten with bolts. Attention do not tighten to hard, material is alloy !



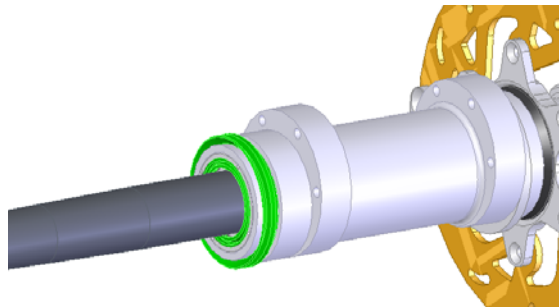
Attention: Assemble without clearance!

Attention ! To work on the W-Tec Eraser Evo chassis you must have excellent mechanic skills. If you do not have these skills do NOT work on this quad !

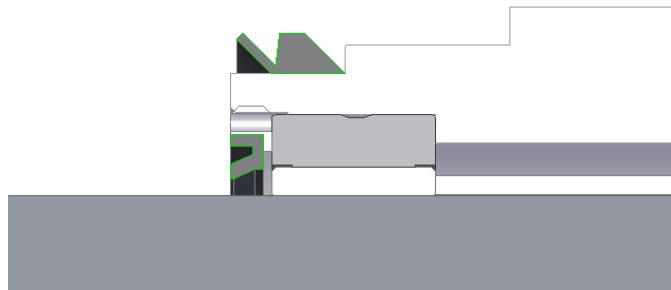
- 7) Place axis with excenter in to the quad and fasten with bolts.
- 8) Slide spacer tube and bearing ring in to the eccentric. Up to the joining piece.



- 9) Place dust seal and oil seal.



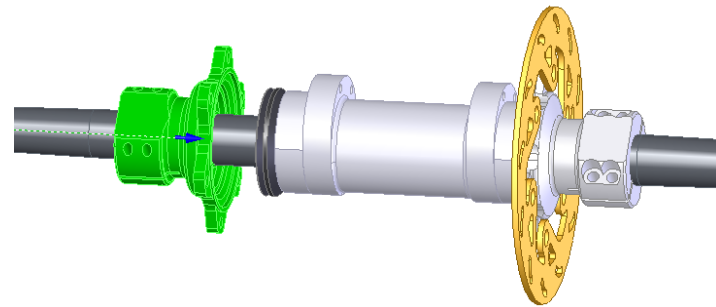
**Attention: Oil seal leaves dust outside de bearing.
(see next picture for detail)**



Section shows the right way of mounting the rings.

**Changes and type failures reserved !
Copy right: W-Tec BV**

- 10) Slide sprocket holder on the axis up to the joining piece.



**Grease inside of sprocket holder.
(see also point 5)**

- Measure distance between sprocket holder and back swing. When it is pushed till it can't move further towards the excenter.
- Enlarge this distance with 1 to 1,5 mm. By slide sprocket holder 1 to 1,5 mm back.
- Fasten sprocket holder with bolts. (not to tightened)

- 11) Place sprocket.
- 12) Place Brake black.

